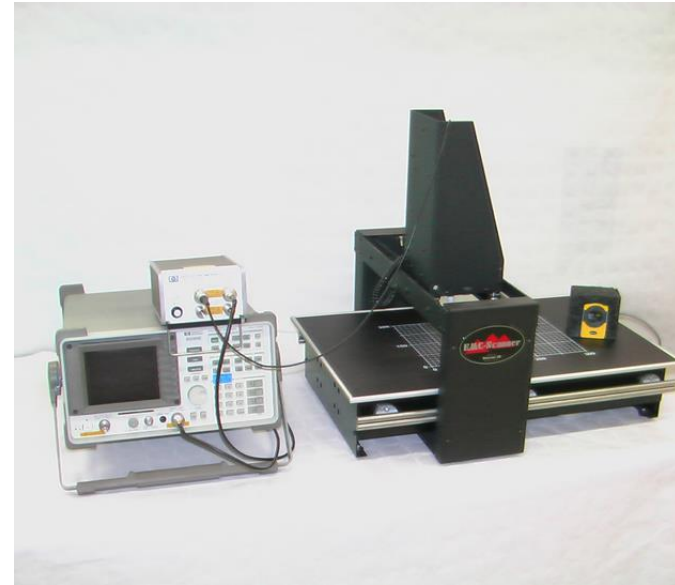
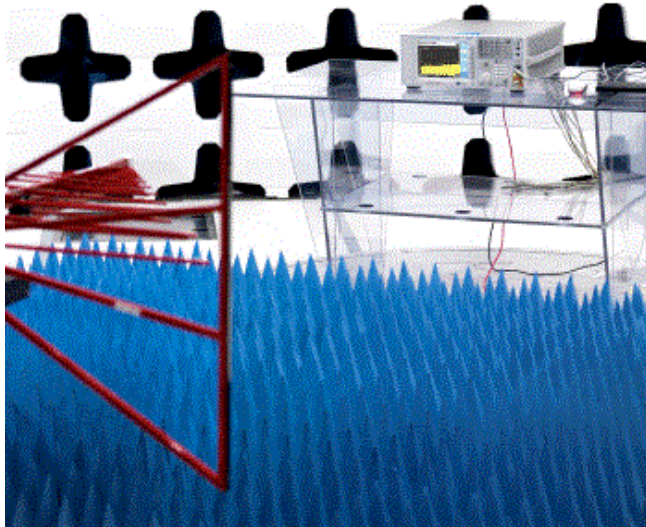
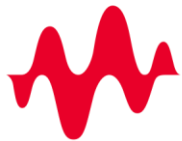


Načrtovanje elektronike za EMC

Študentska delavnica in tekmovanje



Amiteh & EMC



KEYSIGHT
TECHNOLOGIES

Authorized Technology Representative

RIGOL
Beyond Measure

Authorized
Distributor

ETS-LINDGREN
An ESCO Technologies Company

AARONIA AG
WWW.AARONIA.DE


Detectus AB



SCHWARZBECK
Mess-Elektronik

LANGER
EMV-Technik



Cokeva

EMC

Testiranje skladnosti

EMI sprejemniki

LISN

Gluhe komore

Filtri

Antene

ESD testna oprema

RF viri

Merilniki polja

EMC

Pred testiranjem skladnosti

EMI sprejemniki

Gluhe komore

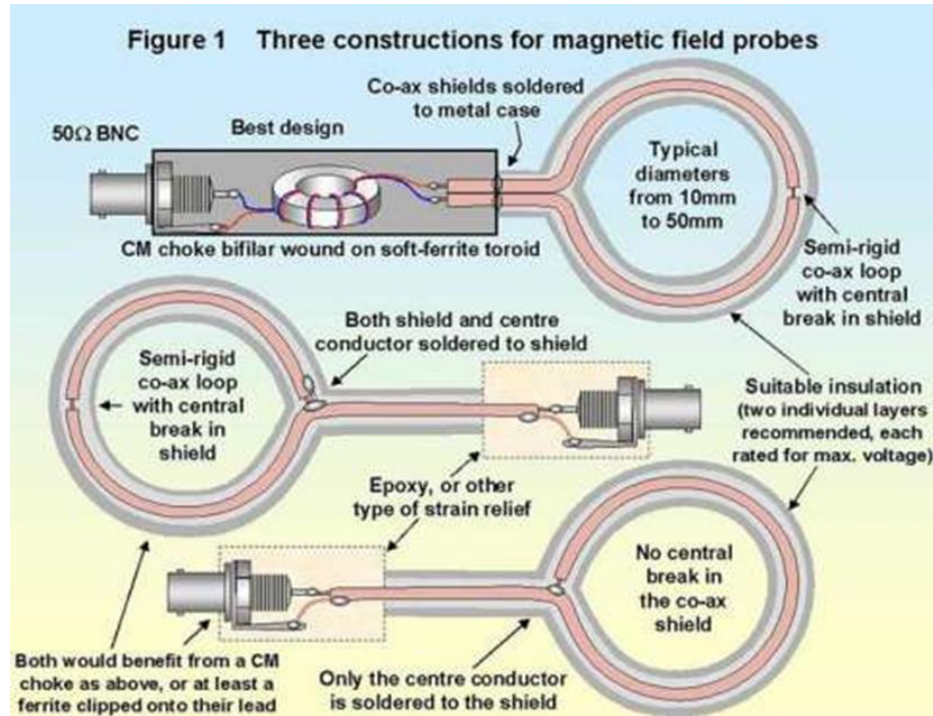
Antene

Sonde za bližnje polje

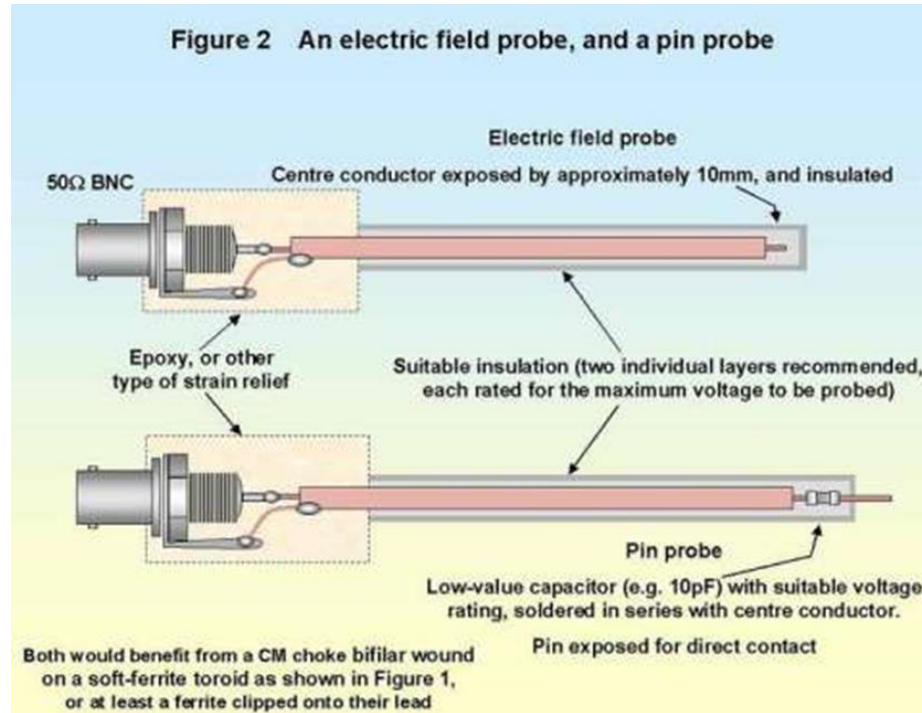
Sonde za bližnje polje



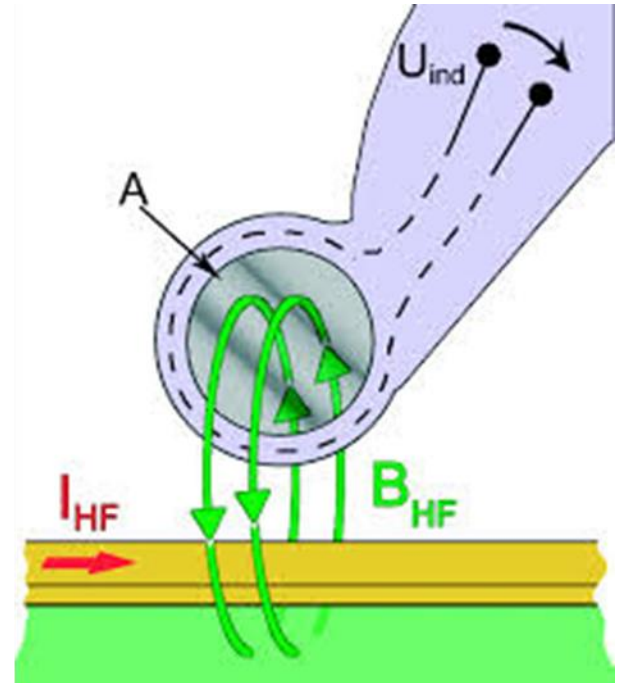
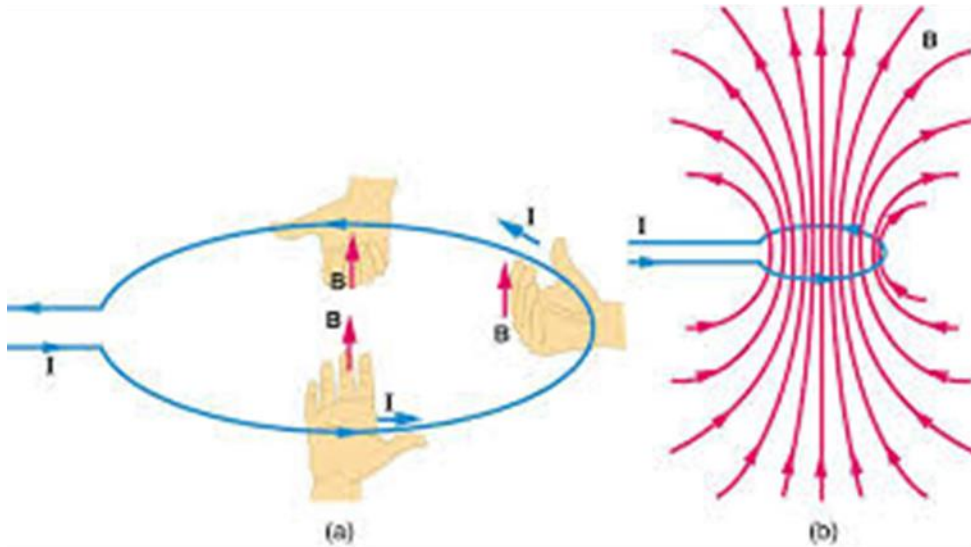
Zgradba H sonde



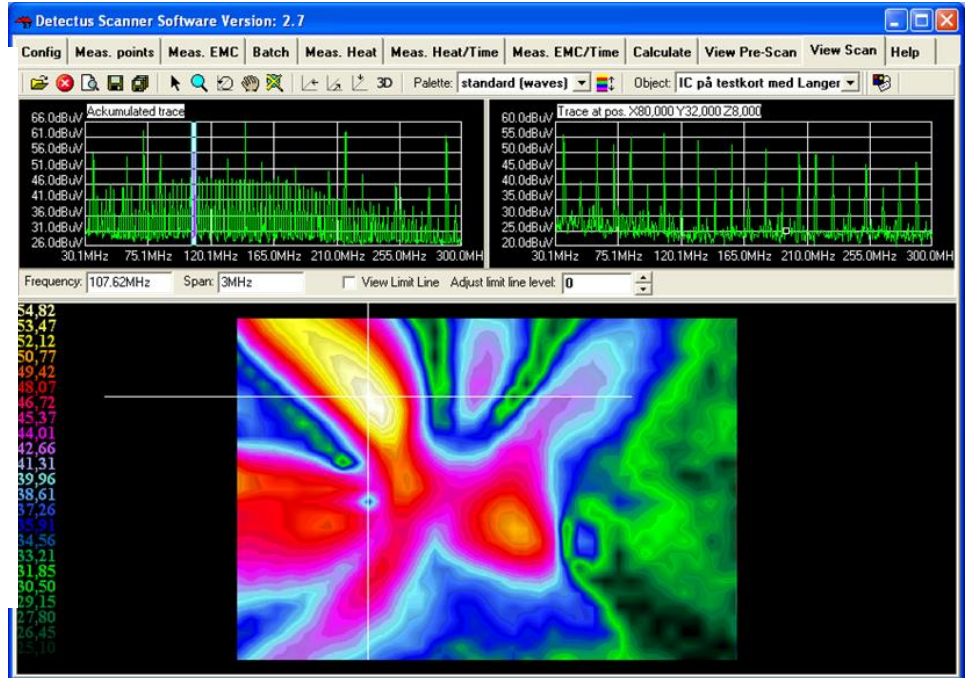
Zgradba E sonde



Usmerjenost polja



EMC Scanner



WHY THE EMC SCANNER

- You save time and money by reducing your need for expensive and time consuming full scale measurement.
- You can see the emission at components level.
- Early in the design phase you can detect potential emission problems.
- You can make comparative measurements to document the effect of a change in design.
- You can maintain a high quality in the production line by measuring samples and comparing them to a reference.
- You do not have to know what frequencies you are looking for thanks to the PreScan and MultiScan function.
- You can use your own instruments
- You can easily document (ISO900x) the emission spectra of your products in both design and production phase.
- You can subtract one measurement from another to remove ambient noise or to be able to see the difference between two products more clearly.

Amiteh:

Hvala!

