

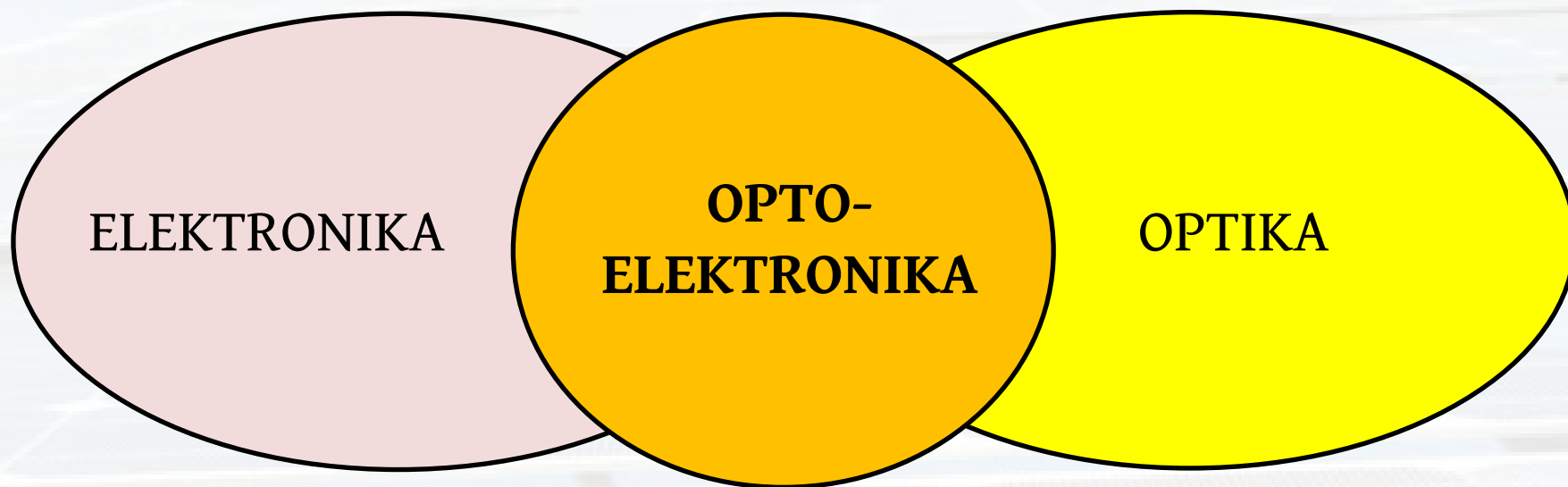
Optoelektronika

Predavatelj: prof. dr. Janez Krč

Asistent: as. dr. Benjamin Lipovšek

Laborant: Jože Stepan

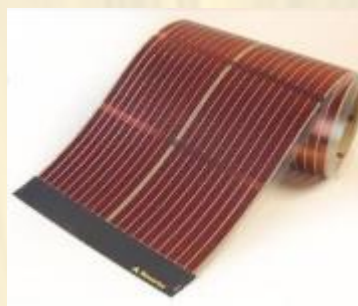
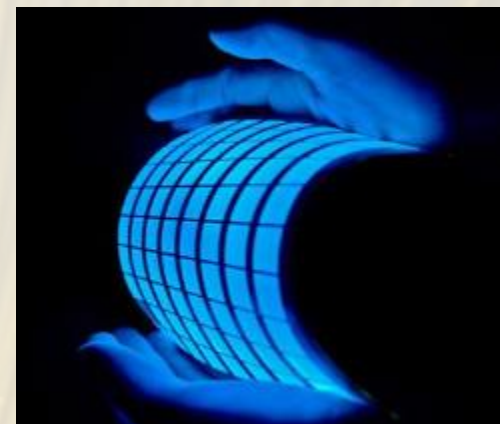
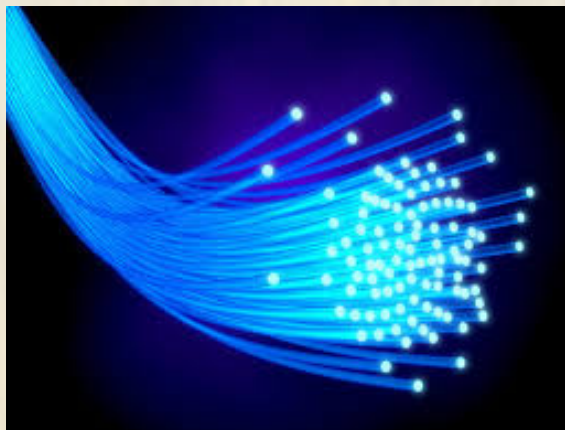




izvor, prenos,
zaznavanje svetlobe
z elektronskimi elementi

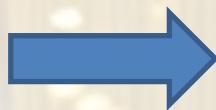


OPTOELEKTRONIKA - spremljevalka našega vsakdana

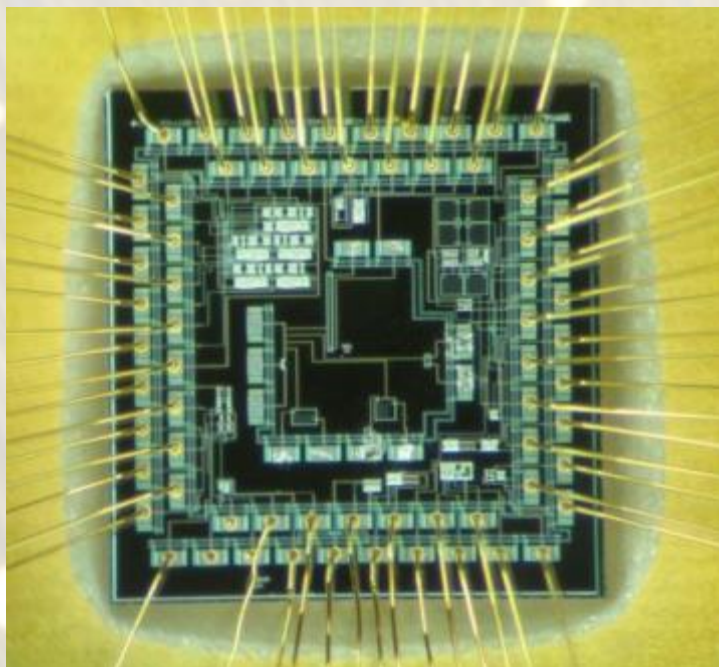


RAZVOJ V SMERI FOTONSKIH VEZIJ

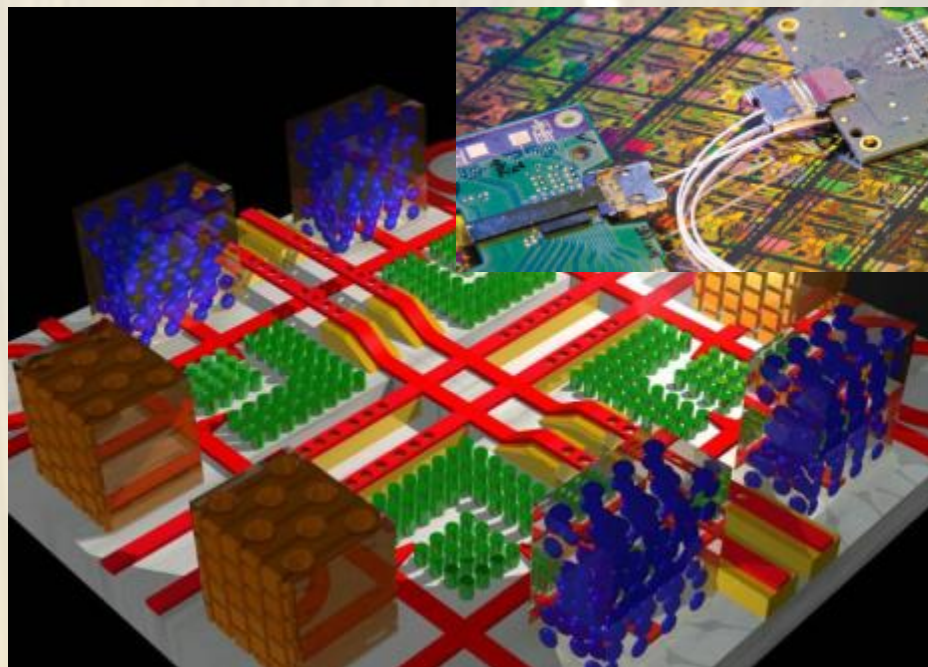
nano
ELEKTRONIKA



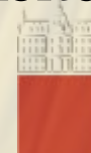
mikro/nano
FOTONIKA



integrirano elektronsko
vezje (danes)

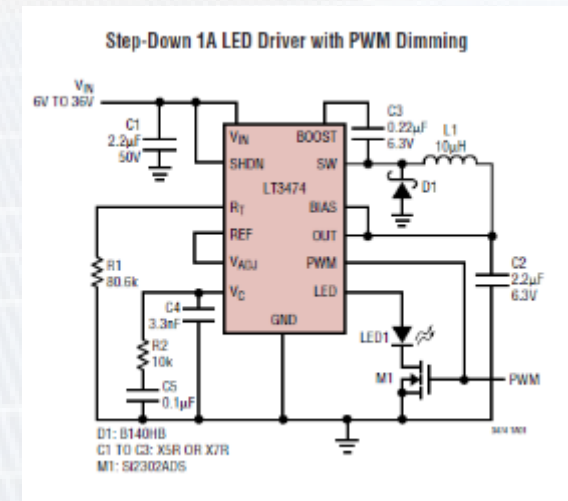
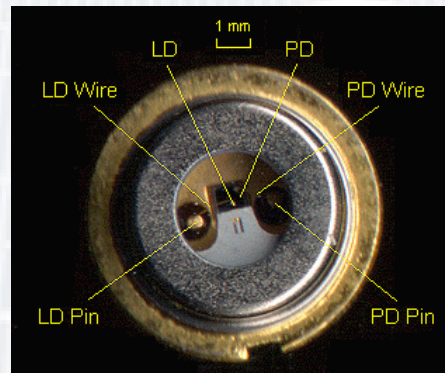
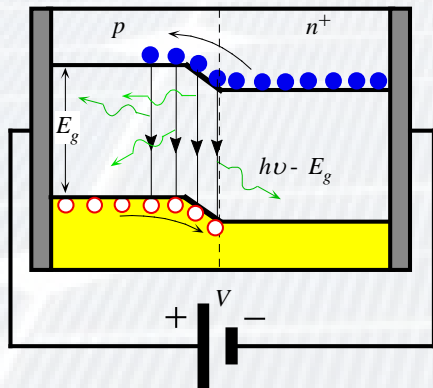


integrirano fotonско vezje
(jutri)



VSEBINA PREDMETA 1. del

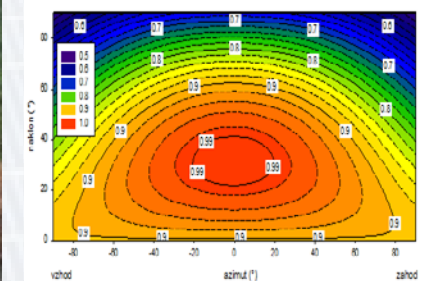
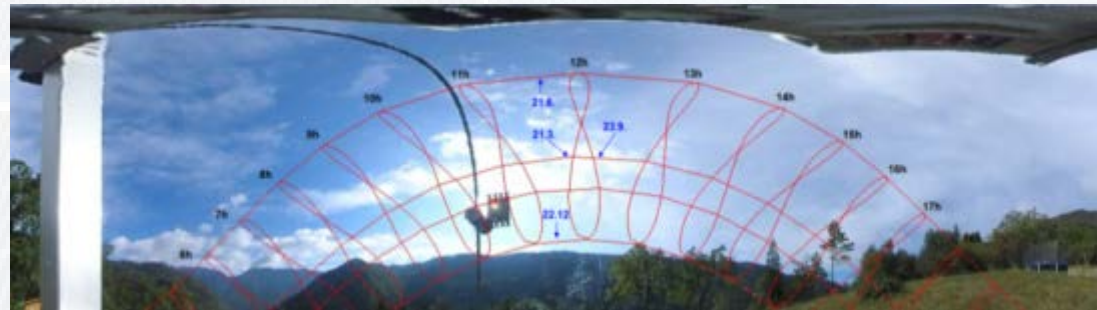
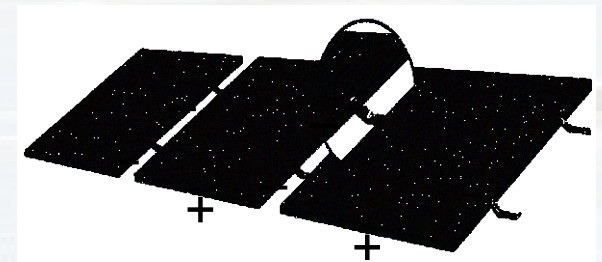
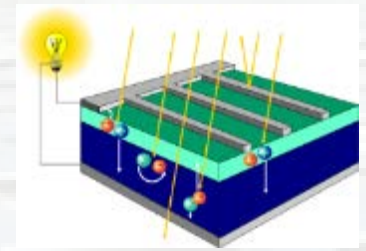
- Optični viri (svetleče diode, laserji, laserske diode)
- Zasloni (LCD, LED, plazemski, 3-D)
- Detektorji svetlobe (polprevodniški)
- Detektorska polja (CCD, CMOS, a-Si)
- Optična vlakna (efekti, prenos)
- Ostali gradniki (fotonski kristali)



VSEBINA PREDMETA 2. del

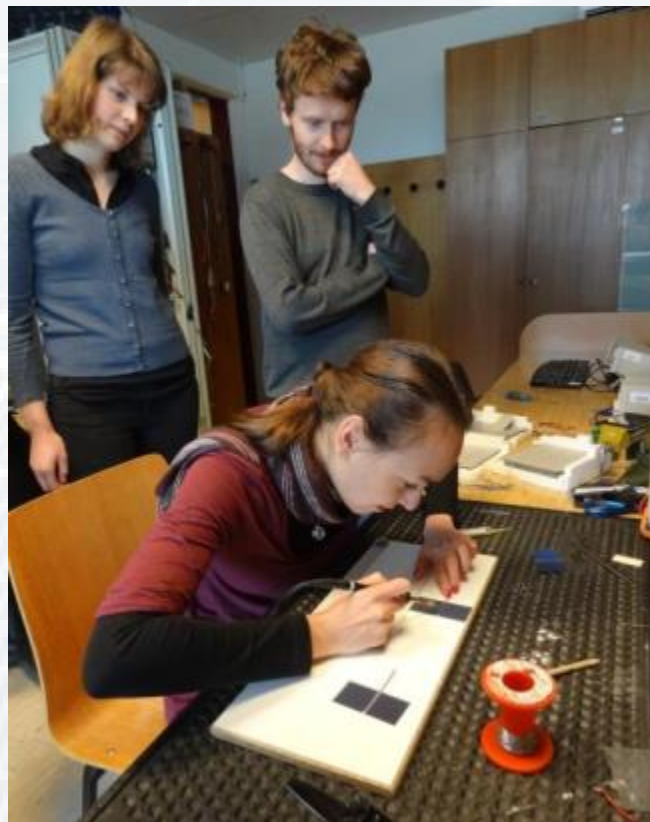
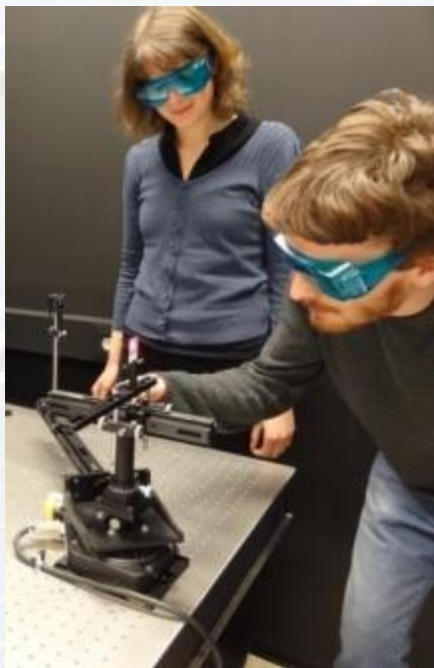
FOTOVOLTAIKA

- Sončne celice in PV moduli
- PV sistemi in gradniki
- Načrtovanje sončne elektrarne



Laboratorijske vaje

potekajo v **študentskem** in deloma v **raziskovalnem** laboratoriju za fotovoltaiiko in optoelektroniko



Ostale info:

<http://lpvo.fe.uni-lj.si/>



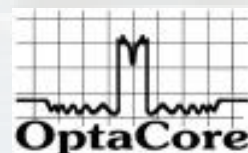
Univerza v Ljubljani
Fakulteta za elektrotehniko

Nekatera podjetja v Sloveniji (optoelektronika, fotonika, fotovoltaika)

- Fotona d.d.
- LPKF Laser&elektronika d.o.o.
- Hella Saturnus d.o.o.
- OptaCore d.o.o.
- Optotek Medical d.o.o.
- Bisol d.o.o.
- Plan-net solar d.o.o.
- KonTiki Solar d.o.o.
- *in ostala podjetja*



Laser & Electronics



OPTOTEK
medical



Univerza v Ljubljani
Fakulteta za elektrotehniko